

# Free Red Heart Crochet Granny Square Coatigan Pattern



CROCHET | SKILL LEVEL: EASY

## ABBREVIATIONS

**Beg** = Beginning  
**Ch** = Chain(s)  
**Cont** = Continue(ity)  
**Dc** = Double crochet  
**Hdc** = Half double crochet  
**Rep** = Repeat  
**Rnd(s)** = Round(s)  
**RS** = Right side

**Sc** = Single crochet  
**Sl st** = Slip stitch  
**Sp(s)** = Space(s)  
**St(s)** = Stitch(es)  
**Tog** = Together  
**Tr** = Treble crochet  
**WS** = Wrong side  
**Yoh** = Yarn over hook

## MATERIALS

Sizes	XS/S/M/L	XL/2/3XL	
<b>Red Heart® All in One™ Granny Square™</b> (8.8 oz/250 g; 417 yds/381 m)			
<b>Contrast A</b>	<b>3</b>	<b>3</b>	<b>balls</b>
Soft White – Spring Serene (2045)	30	42	<b>Squares</b>
<b>Contrast B</b>	<b>4</b>	<b>4</b>	<b>balls</b>
Soft White – Peachy Keen (2042)	33	39	<b>Squares</b>
<b>Red Heart® Super Saver®</b> (7 oz/198 g; 364 yds/333 m)			
<b>Contrast C</b> Soft White (0316)	<b>2</b>	<b>3</b>	<b>balls</b>
	680/619	750/683	<b>yds/m</b>

Sizes U.S. H/8 (5 mm) and U.S. I/9 (5.5 mm) Susan Bates® Silvalume® crochet hooks **or size needed to obtain gauge.** Susan Bates® yarn needle.



Yarniss Crochet Kits with Case, Beginner Crochet Set Includes 18 Yarn Skeins & 12 Ergonomic Crochet Hooks

Now \$25.99  
You save \$4.00  
was \$29.99

**Walmart**



## SIZES

### To fit chest measurement

**XS/S/M** 28-42" [71-106.5 cm]

**L/XL/2XL** 44-54" [112-137 cm]

### Approx finished chest (with edging)

**XS/S/M** 50" [127 cm]

**L/XL/2XL** 62" [157.5 cm]

## GAUGE

Motif = 6" [15 cm] square with larger hook.

## INSTRUCTIONS

### GRANNY SQUARE MOTIF

#### Notes:

- Motifs begin with Color 1 (shortest color rep) from center of pull-skein, leaving a 4" [10 cm] tail to weave in.
- Each color aligns with 1 rnd in the Motif with 5 colors in total. If too much color is left at end of rnd, pull back some sts and slightly loosen gauge to re-work sts and finish at color change. If too little color is left, pull back some sts and slightly tighten gauge to re-work sts and finish at color change.

- When Motif is complete, cut yarn where Color 5 (longest color rep) ends, leaving a tail for weaving in.
- Begin next Motif with Color 1 and repeat 5 rnds for each Motif.
- Ch 3 at beg of rnd counts as dc.
- Ch 6 at beg of rnds counts as dc and ch-3 sp.
- Join all rnds with sl st to 3rd ch of ch-6 unless otherwise indicated.

**Size XS/S/M/L** - make 30 Motifs with A; 33 Motifs with B - 63 total.

**Size XL/2/3XL** - make 42 Motifs with A; 39 Motifs with B - 81 total.

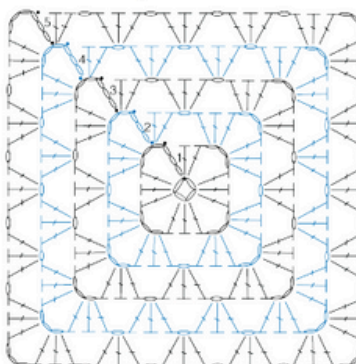
With larger hook and Color 1, ch 4. Join with sl st to first ch to form ring.

**1st rnd:** (RS). Ch 6. (3 dc. Ch 3) 3 times in ring. 2 dc in ring. Join.

**2nd rnd:** Sl st in next ch-3 sp. Ch 6. 3 dc in same ch-3 sp. \*Ch 1. (3 dc. Ch 3. 3 dc) in next ch-3 sp. Rep from \* twice more. Ch 1. 2 dc in first ch-3 sp. Join.

**3rd rnd:** Sl st in next ch-3 sp. Ch 6. 3 dc in same ch-3 sp. \*Ch 1. 3 dc in next ch-1 sp. Ch 1. (3 dc. Ch 3. 3 dc) in next ch-3 sp. Rep from \* twice more. Ch 1. 3 dc in last ch-1 sp. Ch 1. 2 dc in first ch-3 sp. Join.

**4th and 5th rnds:** Sl st in next ch-3 sp. Ch 6. 3 dc in same ch-3 sp. \*(Ch 1. 3 dc) in each ch-1 sp to next ch-3 sp. Ch 1.\*\* (3 dc. Ch 3. 3 dc) in next ch-3 sp. Rep from \* twice more, then from \* to \*\* once. 2 dc in first ch-3 sp. Join. Fasten off.



#### STITCH KEY

- = chain (ch)
- = slip stitch (sl st)
- ⌋ = double crochet (dc)

## ASSEMBLY

**Note:** Join Motifs tog using Contrast C as shown in diagrams on page 4.

**Size XS/S/M/L only:** Sleeves are joined separately then sewn into Body after Body is assembled. Note folded Motifs on side seams of Body will leave a 24" [61 cm] square total armhole opening for sleeves on each side (see shaded sections on diagram for square armhole sleeve placement).

**All Sizes: Join Motifs:** Hold RS of 2 Motifs facing each other with sts aligned. With larger hook, join using Contrast C with sl st in ch-2 corners of aligned Motifs at top right. With RS facing each other, following diagrams, join Motifs, matching lettered sides and working rows of sl st loosely through both thicknesses. Fasten off.

**Sleeve Edging: 1st row:** (RS). With smaller hook, join C with sl st in lower edge of Sleeve and work 38 sc evenly across. Turn.

**2nd to 6th rows:** Ch 1. 1 sc in each sc to end of row. Turn.

Fasten off. Sew sides of Sleeve Edging.

Yarniss Crochet Kits with Case, Beginner Crochet Set Includes 18 Yarn Skeins & 12 Ergonomic Crochet Hooks

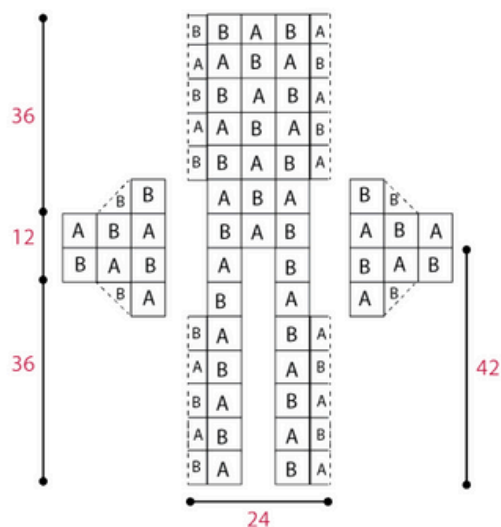
Now \$25.99  
You save \$4.00  
was \$29.99

**Walmart** 



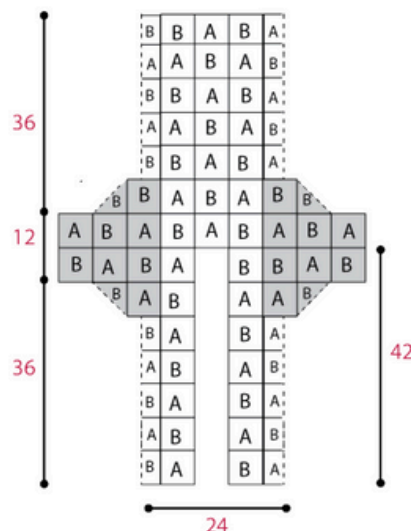


Size XS/S/M/L Body & Sleeves  
Motif Placement

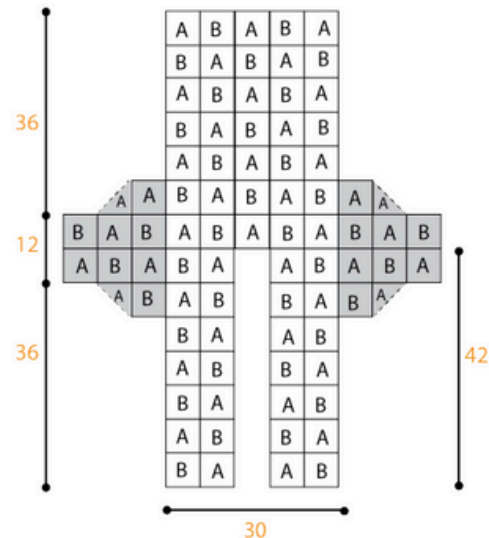


Indicates fold line of  
Motif

Size XS/S/M/L Final Assembly



Size XL/2/3XL Assembly



Yarniss Crochet Kits with Case, Beginner Crochet Set Includes  
18 Yarn Skeins & 12 Ergonomic Crochet Hooks

Now \$25.99  
You save \$4.00  
was \$29.99

**Walmart**



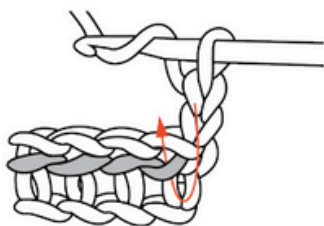
**Lower Edging: 1st row:** (RS). With smaller hook, join C with sl st in lower edge of Left Front corner and work sc evenly across lower edge to corner of Right Front. Turn.

**2nd to 6th rows:** Ch 1. 1 sc in each sc to end of row. Turn. Fasten off.

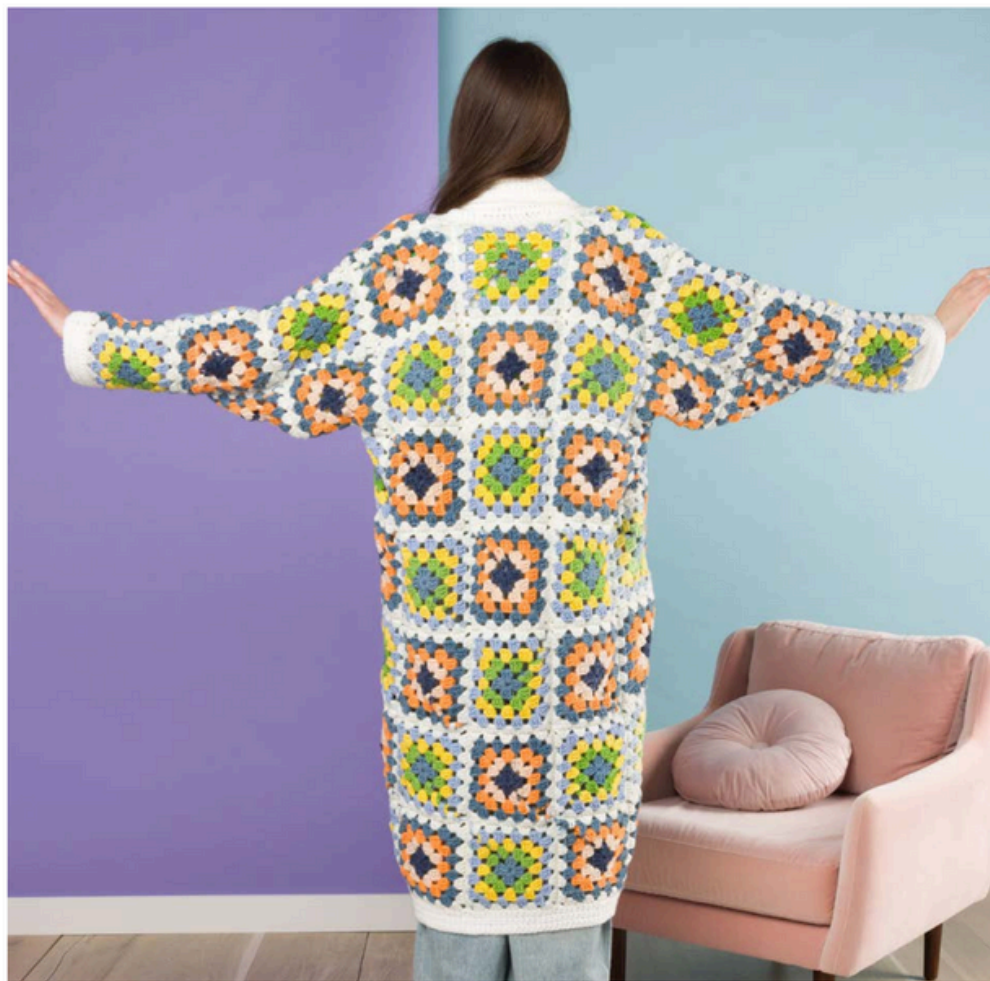
**Collar and Front Band: 1st row:** (RS). With smaller hook, join C with sl st in lower edge of Right Front and work sc evenly up Right Front, across back neck and down Left Front. Turn.

**2nd row:** Ch 2 (does not count as hdc). 1 hdc in each sc to end of row. Turn.

**3rd row:** Ch 2. Working into horizontal loop lying below next st (see diagram), work 1 hdc in each hdc to end of row. Turn.



Rep last row until Collar and Front Band measures 8" [20.5 cm]. Fasten off.



Yarniss Crochet Kits with Case, Beginner Crochet Set Includes 18 Yarn Skeins & 12 Ergonomic Crochet Hooks

Now \$25.99  
You save \$4.00  
was \$29.99

**Walmart**



**BUY NOW**

